



Home Elevators

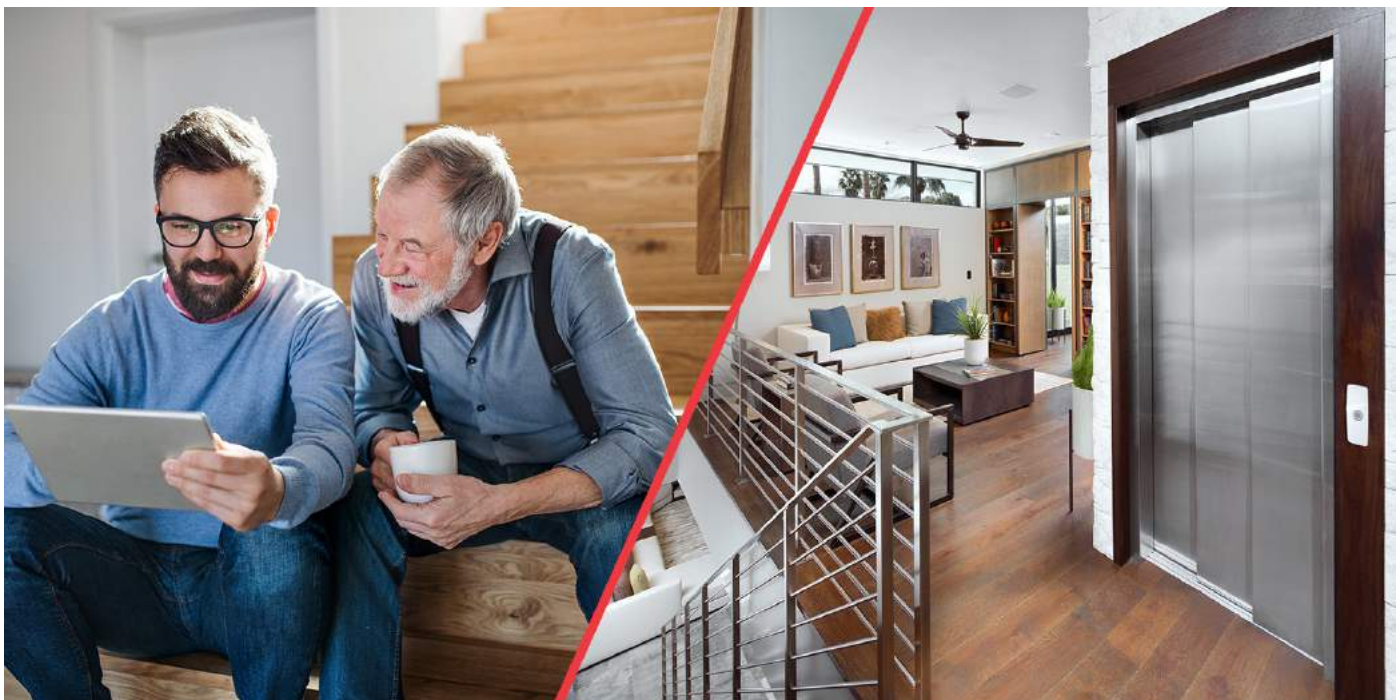
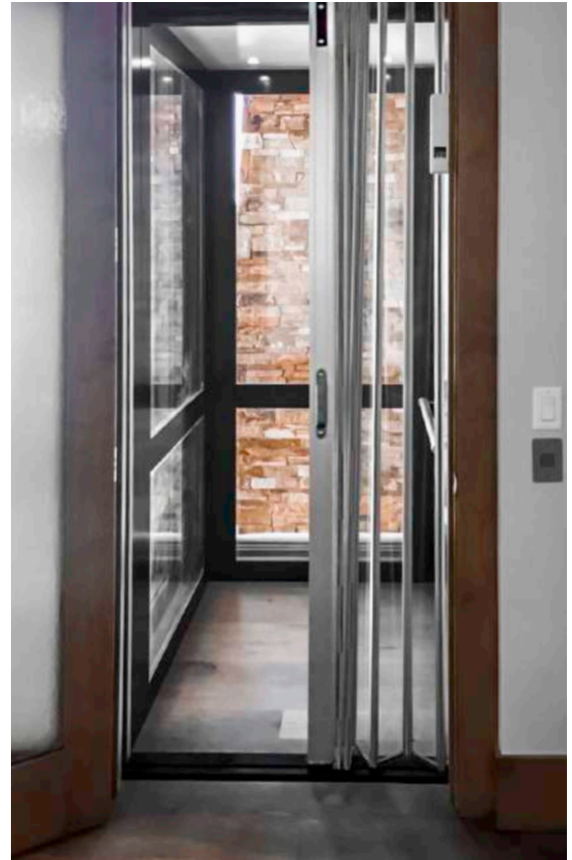
Live in your home with comfort and style



Why a residential elevator

Make your life more comfortable with a Garaventa Lift Solution

- Comfortably overcome any barriers and tiring stairs.
- Reduce heavy lifting when transporting storage, laundry or groceries.
- An investment for your future accessibility needs.
- Choose from a variety of materials and finishes to fit your style and taste.
- Our elevators are easy to install, especially in existing buildings.
- Make daily routines easier!
- A Garaventa Home Elevator will quickly become part of everyday life.



Why Garaventa Lift



**Garaventa Lift has been moving people since 1928.
Our products have always stood the test of time.**

We began by building ropeways in the Swiss Alps. Garaventa Lift has since become a global organization, representing reliability, safety, and innovation. For over 90 years we have been designing the best mobility solutions for people to make every move comfortable and safe.

Our secret?

Customer proximity all the way, from the choice of the home elevator to after installation.

Consultation



Design



Installation



Servicing



Bring efficiency to your home



Add value to your home

A Garaventa Lift Home Elevator significantly increases the value of your house while other accessibility solutions can decrease the resale value. Compared to the costs of moving, a home elevator is a small investment that gives you and your family the peace of mind for now and for your future.

Few steps in simplicity

Comfortably overcome the few entrance steps and, why not, bring in the shopping bags too. Your guests will be impressed by the style and will appreciate the comfort and ease that a Garaventa Lift Home Elevator brings to your home.

Bring efficiency to the core

Garaventa Lift residential home elevators and lifts are comfortable, quiet and have low energy consumption. So you can be comfortable and feel good about the environment.

Door and Gate Packages

Premium Package

Sliding elevator hall doors and sliding elevator car doors

- The hallway landing doors engage with the car doors when the elevator is at the landing.

Car Door Colors

Standard: White • Black

Optional: Stainless Steel • Custom RAL Color
Glass with Stainless Steel Frame

Landing Door Colors

Standard: Primed Ready for On-site Paint

Optional: Stainless Steel •
Glass with Stainless Steel Frame



Upgrade Package

Swinging hall doors with sliding elevator car doors

- Inside elevator cab is equipped with automatic 3-speed sliding doors
- The hallway landing doors are swinging passage doors.

Car Door Colors

Standard: White • Black

Optional: Stainless Steel • Custom RAL Color
Glass with Stainless Steel Frame



Standard Package

Swinging hall doors with accordion car gates

- Accordion gate(s) can be provided with optional automatic gate operator(s).

Standard Gate Panels

Standard gates include three clear acrylic vision panels.



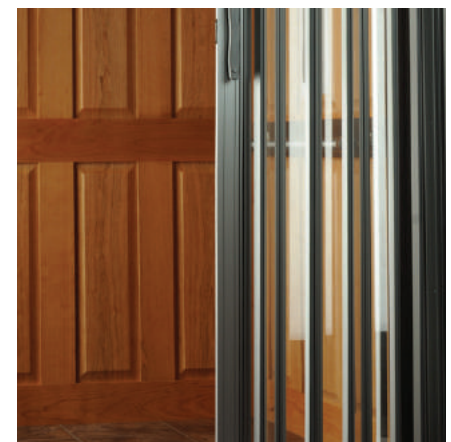
White



Antique White



Black



Optional Gate Panels

Bronze Acrylic • Clear Acrylic • Perforated Aluminum •

Solid Panels Only (without the three standard acrylic vision panels)

Cab Wall Selections



**Veneer Panel
(Standard)**



**Design It Yourself /
MDF Walls (Optional)**



**Melamine Panel
(Optional)**



**Aluminum and Glass
Panel (Upgrade)**



**Raised Panel*
(Upgrade)**



**Recessed Panel*
(Upgrade)**

Wall Materials

Standard



Maple



Red Oak



Mahogany



Birch

Optional



Walnut



Hickory



Makore



Bamboo



Cherry

***Raised- and
Recessed Panel
only available in
Maple, Red Oak
and Cherry.**

Melamine Colors



White



Antique
White



Light
Maple



Dark
Maple



Grey



Oak



Walnut



Black

**NOTE: With Upgrade or Premium
sliding door packages, melamine
walls are only available in black or
white.**

Choose from a wide variety of accessories

Car Operating Panels (COP), Hall Stations, Handrails, Lights

Elite



White Glass



Black Glass



Bronze
Mirror Glass



Champagne
Mirror Glass

Premium



Polished (Mirror)
Stainless Steel



Polished (Mirror)
Gold



Oil Rubbed
Bronze

Standard



Brushed Stainless
Steel

Handrails



Premium
Brushed Stain-
less Steel



Premium
Polished Stain-
less Steel



Premium
Brushed Brass



Premium
Polished Brass

Ceiling Lights



White



Black



Standard
Brushed Stain-
less Steel



Chrome

Premium and Elite Fixtures

With a sharper and smoother design, graceful curves and stylish durability, the Premium and Elite Lines combine luxury and convenience without compromising style. COP matches hall stations and call button with a finish back-plate. Hinges for all COP panels to assist with service and maintenance are included. Optional digital floor display I-Button and key fobs. Enhance security are available.

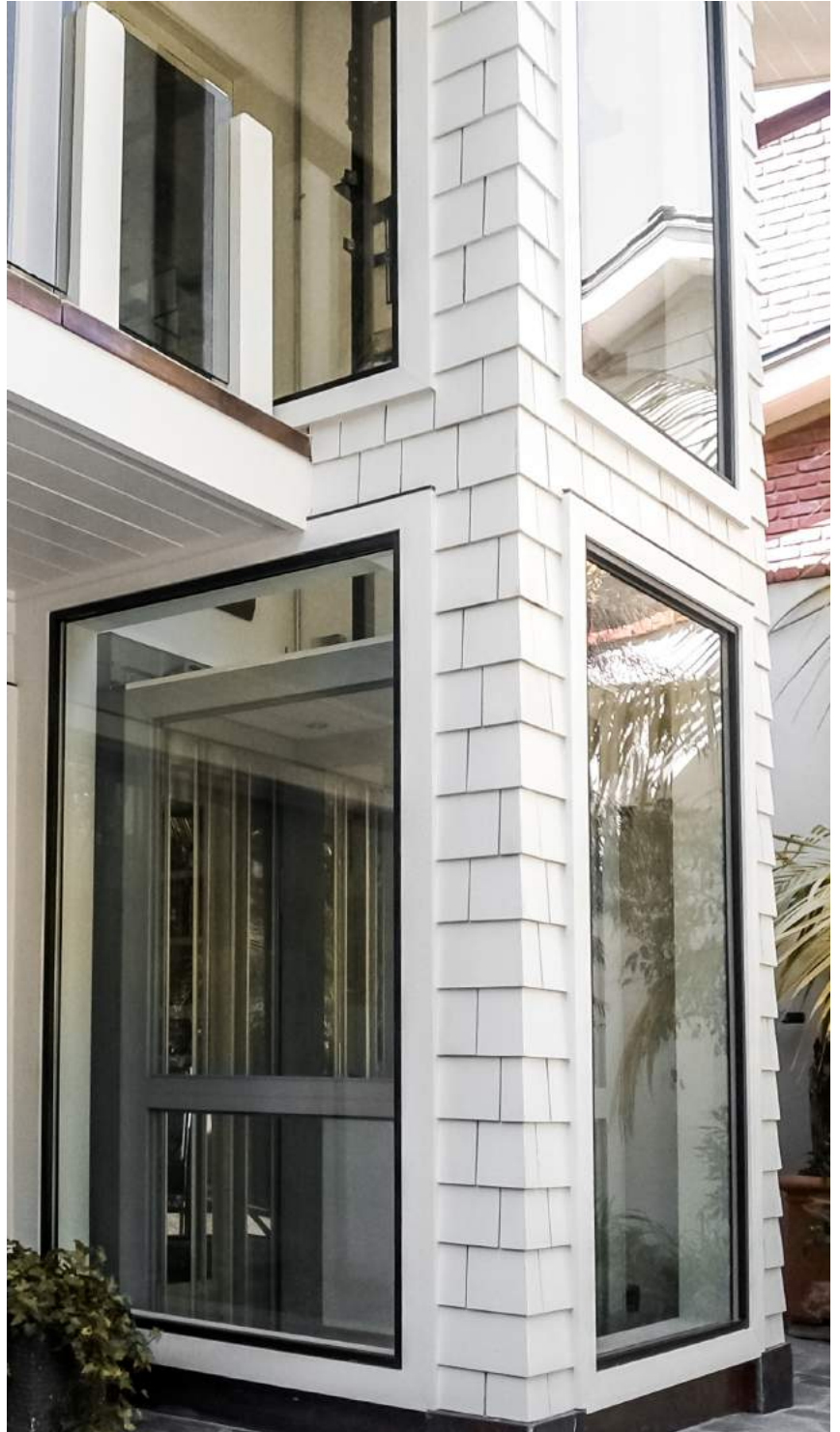
Standard Fixtures

With a digital floor display, floor selection buttons and emergency stop/alarm button, our Standard Fixture line includes safety and security. Technology is at the core of the design and it focuses on details such as an integral telephone providing a solid and comfortable feel to both the Car Operating Panels and the Hall Stations.

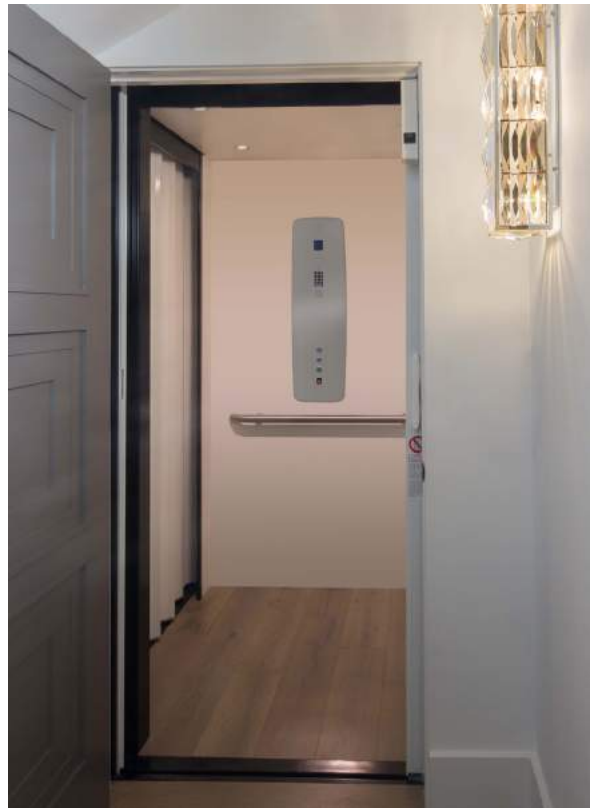
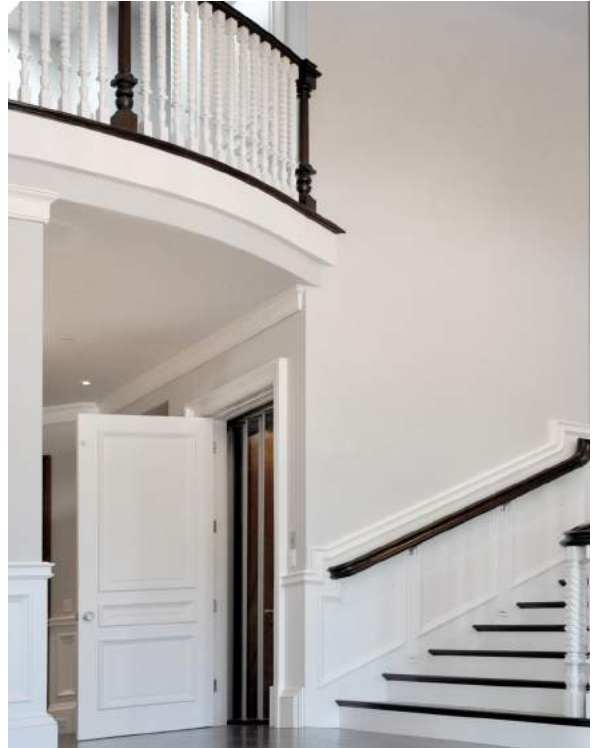
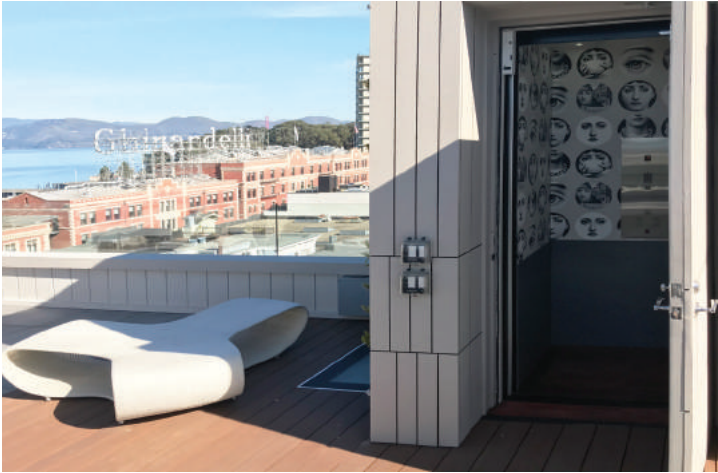
Applications - Sliding doors in action



Applications - Make room for light



Applications - Perfectly Integrated



Specifications - Elvoron

Overhead Clearances Required:	Hydraulic Drive	In-Line Drive	In-Line Drive w/Controller at top of hoistway (MR II Small Only)
84" Cab height - standard door pkg.	96" (2438 mm)	96" (2438 mm)	108" (2743 mm)
84" Cab height - upgrade / premium door pkg.	96" (2438 mm)	96" (2438 mm)	114" (2896 mm)
96" Cab height - standard door pkg.	108" (2743 mm)	108" (2743 mm)	120" (3048 mm)
96" Cab height - upgrade / premium door pkg.	108" (2743 mm)	108" (2743 mm)	120" (3048 mm)
Rated Load: Standard 1,000 lbs (455 kg)			
Speed: 40 ft/min (12.2 meters/min) nominal speed			
Travel Range: Up to 50 feet (15.2 m)			
Stops: Up to 8 stops (in-line drive), up to 6 stops (hydraulic drive)			
Standard Controls: Fully automatic push button operation Digital floor indicator in car Automatic car lighting upon entry 2 tone illuminated push buttons			
Standard Safety Features: Battery-powered emergency lowering Safety braking system Car door and hall door safety monitoring system Emergency stop and alarm			
Hydraulic Drive System: 1:2 cable hydraulic drive Quiet submersed pump and motor Two-speed valve for smooth start and stop			
In-Line Drive System: Geared direct drive motor Variable frequency drive for smooth start and stop Speed monitor			
Power Requirements: 230 VAC single phase Optional 208 VAC 3 phase (Hydraulic Drive only)			
Popular Options: Premium or Elite fixtures 3-speed sliding doors			
Flooring: By others to match the home decor Minimum 1/8" thick Maximum 3/4" thick			
Warranty: 2 year standard warranty Optional additional 5 year extended warranty to 7 years (North America Only)			

For more dimensional information, refer to the [Design and Planning](#) guide.



More questions about home elevators and lifts?

Garaventa Lift

T 604 594 0422 • **T** 800 663 6556 (toll free North America)
E info@garaventlift.com • **I** www.garaventlift.com

Uppercut Elevators and Lifts
403.519.3186
andrew@uppercut-elevator.com

Authorized Garaventa Lift Representative

© Garaventa Lift. As we are continuously improving our products, specifications outlined in this brochure are subject to change without notice.

81296-A-PB