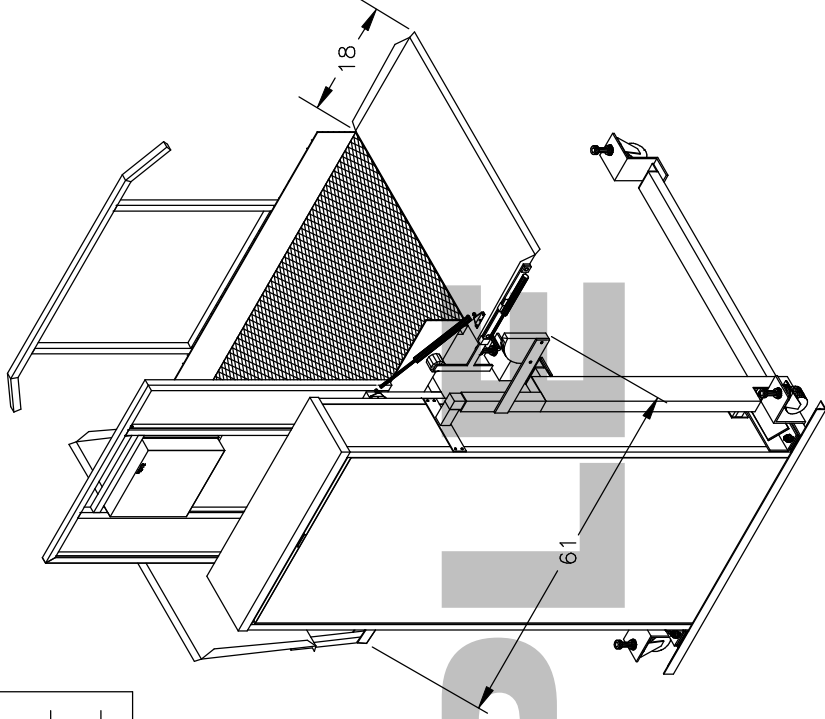
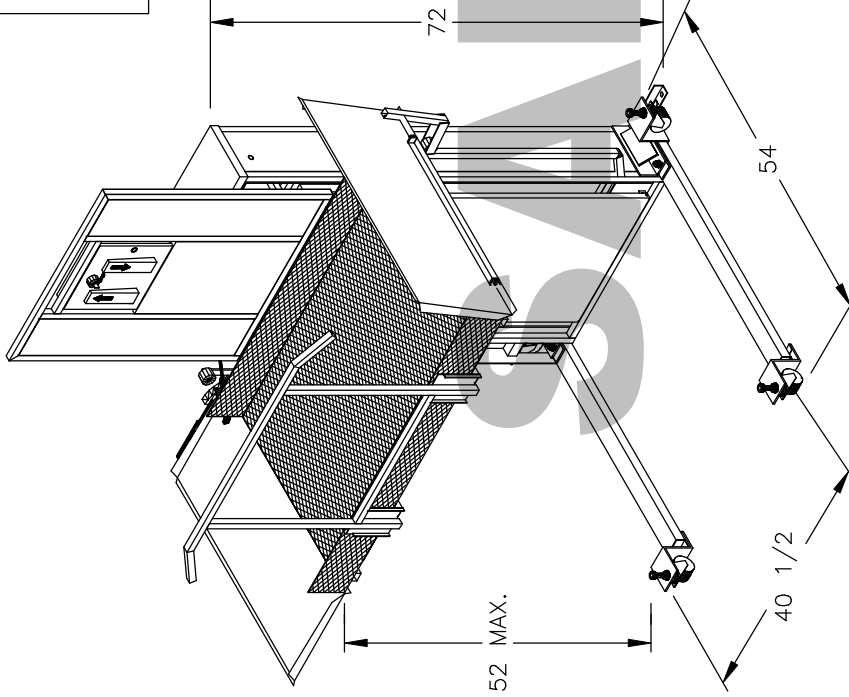


- Accepted as Shown
- Revise and Resubmit
- Accepted as Modified
- Date: \_\_\_\_\_
- Per: \_\_\_\_\_

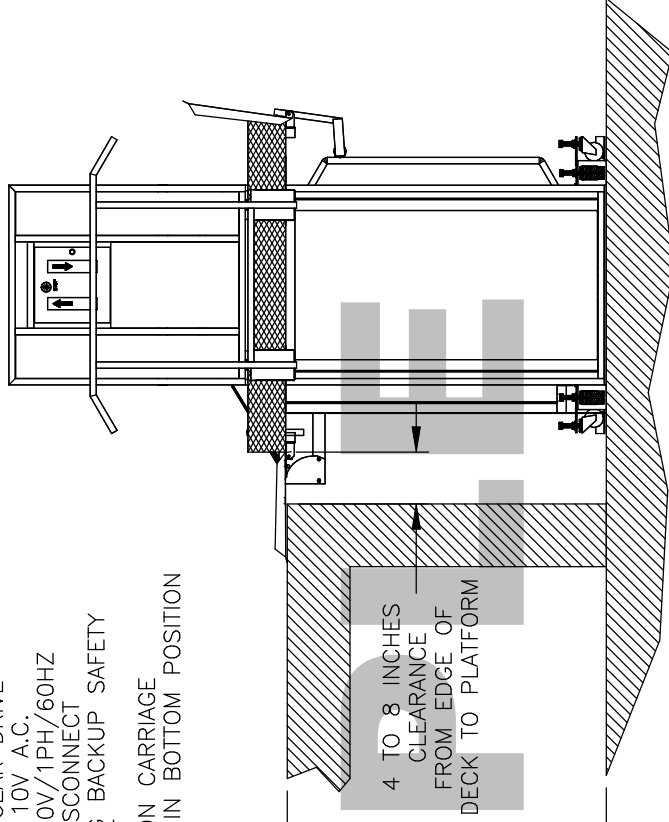
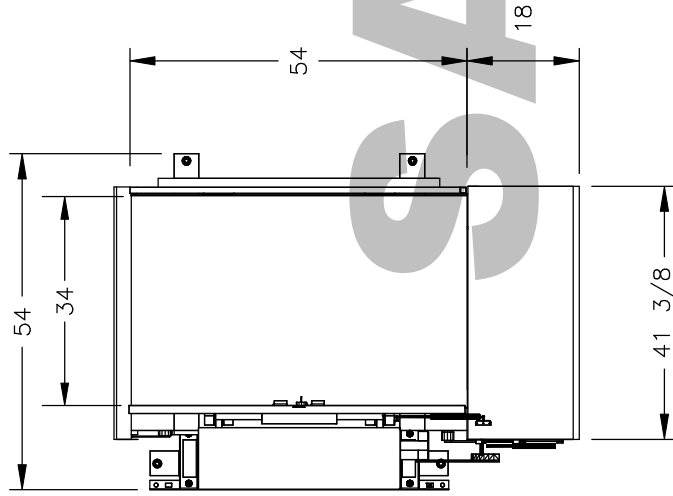


NOTES:  
 — Dimensions are in inches

	B	BH	28/3/06	CORRECT DECK DIMENSIONS
JOB No.	TOTAL TRAVEL	52	INCHES	No. OF LANDINGS
		[1321]	mm	2
LOCATION	PORTABLE TRUS<T>LIFT SAMPLE DRAWING			
ARCHITECT				
GENERAL CONTRACTOR				
		<b>TRUS-T LIFT</b>		TRUS-T-LIFT INSTALLATION DETAILS AND SPECIFICATIONS
		DWN. BY: B. HANNAH	DATE:	DRAWING No.
		CHECKED BY:	04/04/05	52PORTABLE
		SCALE:	N.T.S.	1/2
				REV B

**SPECIFICATIONS:**

- 34" x 54" LIFT PLATFORM
- 54" x 54" FOOTPRINT
- 72" HEIGHT
- 23" - 52" LIFT RANGE
- MAXIMUM LOAD 550 lbs [250 kg].
- 8 FEET/MINUTE [2.4 METRES/MINUTE]
- LIFT SPEED
- SCREW NUT WORM GEAR DRIVE
- MOTOR: 1/2 H.P. 110V A.C.
- POWER SUPPLY: 110V/1PH/60HZ
- C/W 15A FUSED DISCONNECT
- NON-LOAD BEARING BACKUP SAFETY
- NUT ON LIFT SHAFT
- SAFETY HANDRAIL ON CARRIAGE
- ZERO-LOAD START IN BOTTOM POSITION



SECTION A-A

PLAN VIEW SECTION

B		BH	28/3/06	CORRECT DECK DIMENSIONS
JOB No.	TOTAL TRAVEL	52	INCHES	No. OF LANDINGS
LOCATION	PORTABLE TRUS-T>LIFT	[1321]	mm	2
ARCHITECT	SAMPLE DRAWING			
GENERAL CONTRACTOR	DWN. BY: B. HANNAH			
	CHECKED BY:			
	SCALE: N.T.S.			
	DATE: 04/04/05			
	DRAWING No. 52PORTABLE 2/2			
	REV B			
<b>TRUS T LIFT</b>				
TRUS-T-LIFT INSTALLATION DETAILS AND SPECIFICATIONS				